

Starting in Newpark: Parent/Guardian Information Session



Introductions

- **Principal – Eoin Norton**
- **Year Leader – Dermot O'Neill**
- Deputy Principals
- Administration team
- AEN representatives
- Chaplain
- Nurses



Agenda

- What are the key aims for first year?
 - Who will you and your child meet? Who's who?
 - Communication within the school community?
 - Curriculum provision? Junior Cycle?
 - Transitioning from primary to post-primary?
-
- Some practicalities and future dates
 - Q&A – group and individual



Ethos

We are a *comprehensive* school illustrated in three core value strands:

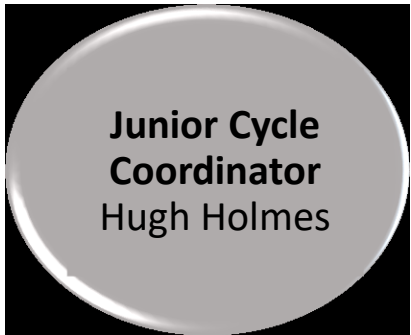
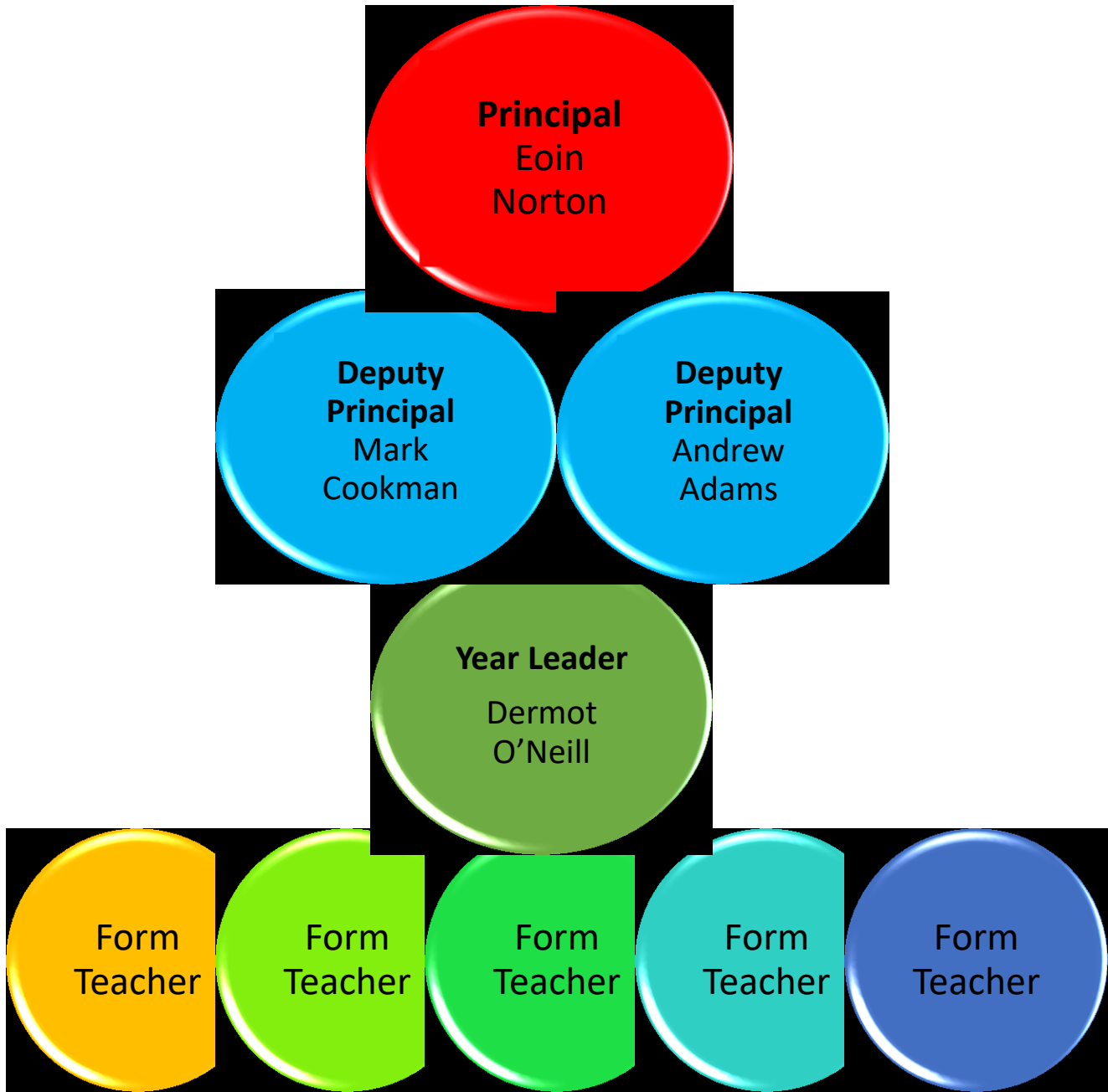
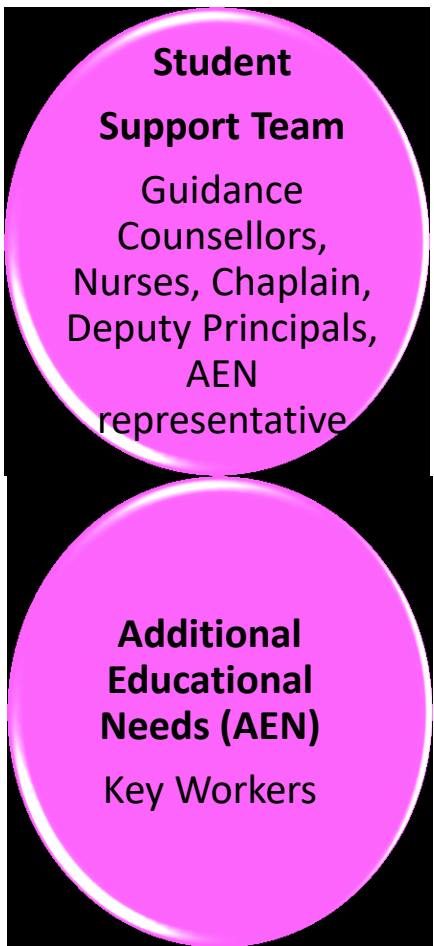
- Comprehensive intake
- Comprehensive curriculum
- Comprehensive outcomes



Key aims for First Year

- Settle in and enjoy coming to school; be well
- Set good patterns of participation and achievement in classwork and homework
- Develop and maintain good practices and high standards in the content and presentation of work
- Engage critically and creatively
- Participate in extra curricular activities





Communications

- School Journal
- Website newparkschool.ie
- School App
- Text message
- Email/letter
- VShare
- Parent/Guardian teacher meetings
- Newsletter



Newpark App

Easy to download and use

Used by students, parents and staff

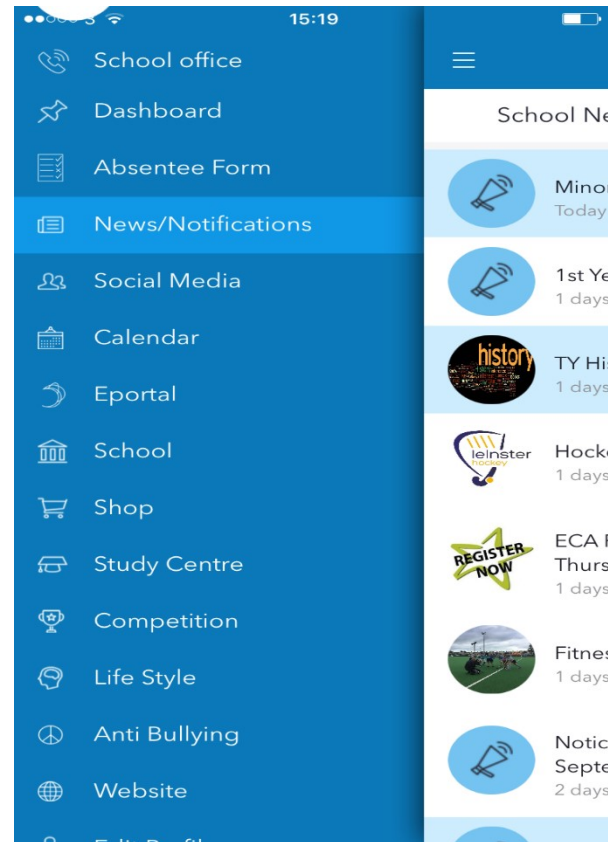
Option to select information you would like to receive

(Only tick the items that are relevant to and useful for you)

Sends out push notifications

(Choose the ones you want or turn them off)

Reduces the amount of queries and calls to the office



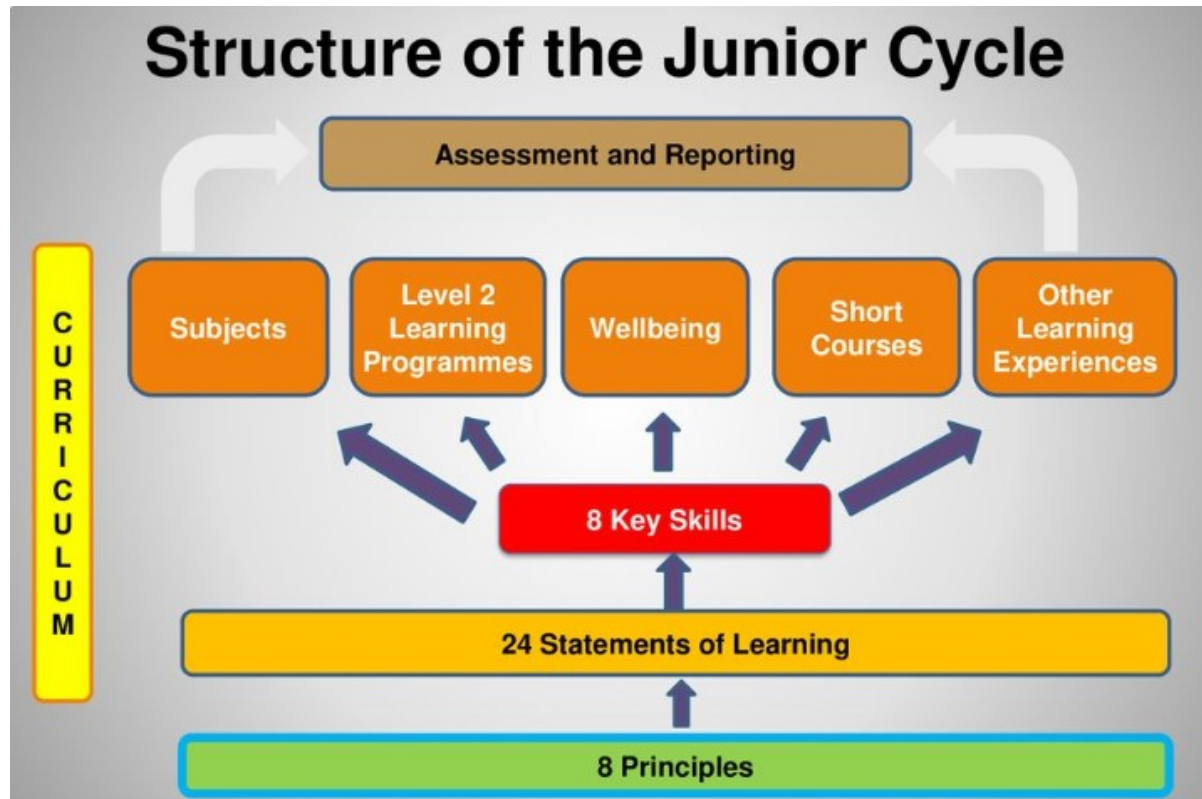
VShare



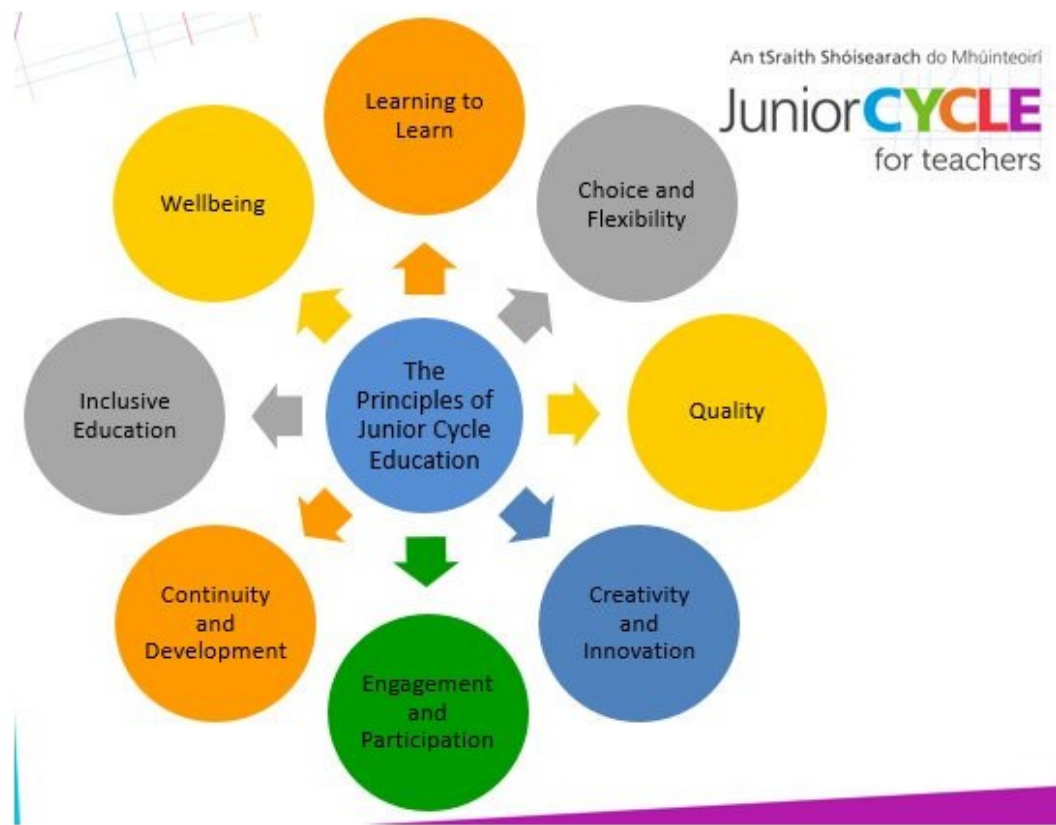
Attendance (to school and class)
Students' timetables
School reports
Names of teachers
Behaviour record (positive and negative)



Junior Cycle



Junior Cycle

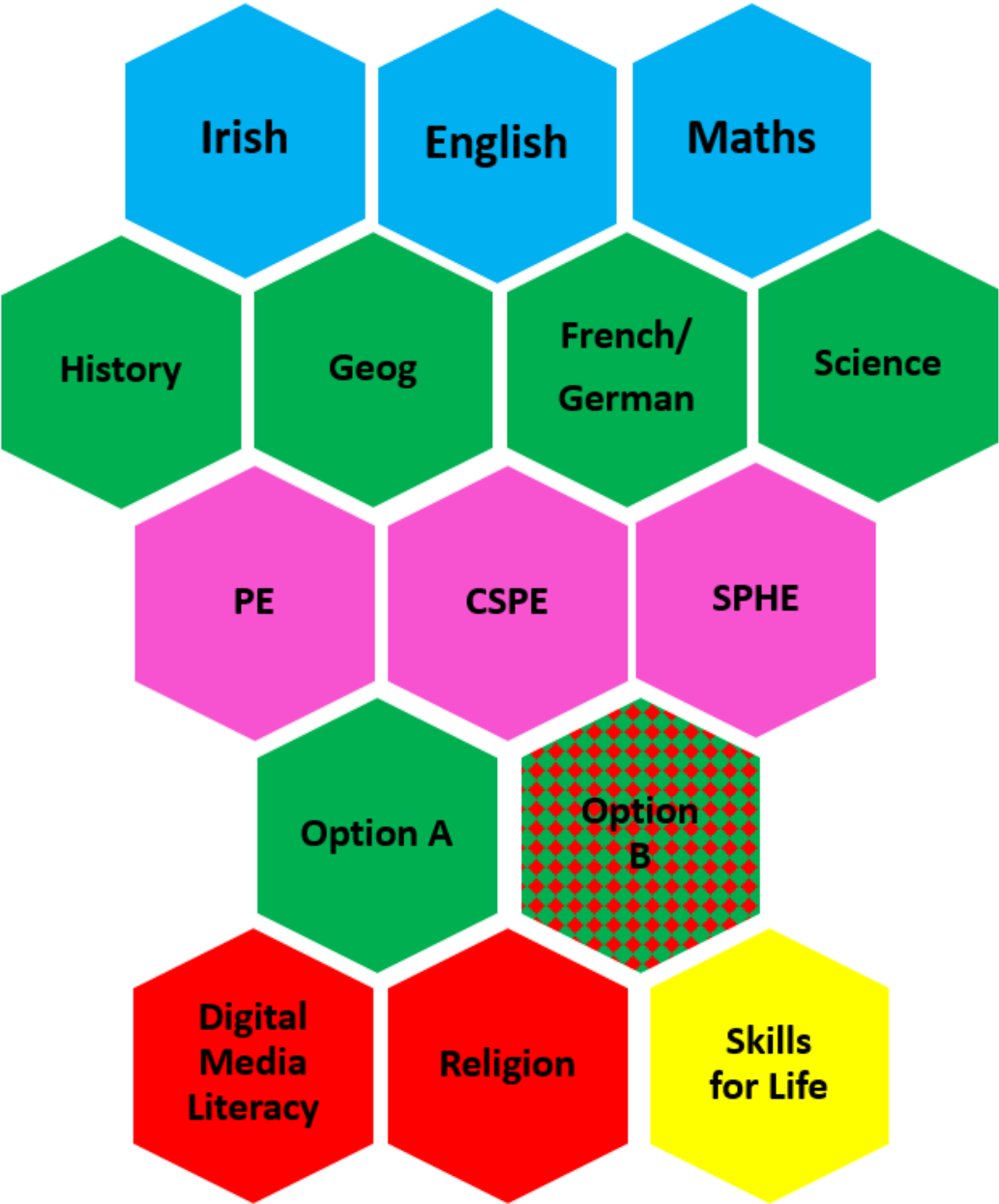
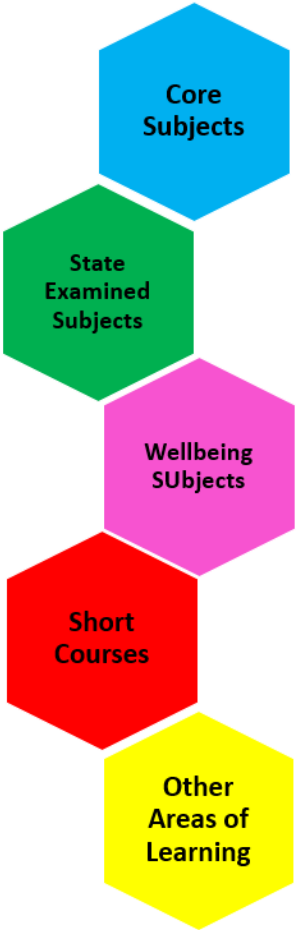


Junior Cycle



Newpark
Comprehensive School

Junior Cycle Programme in Newpark

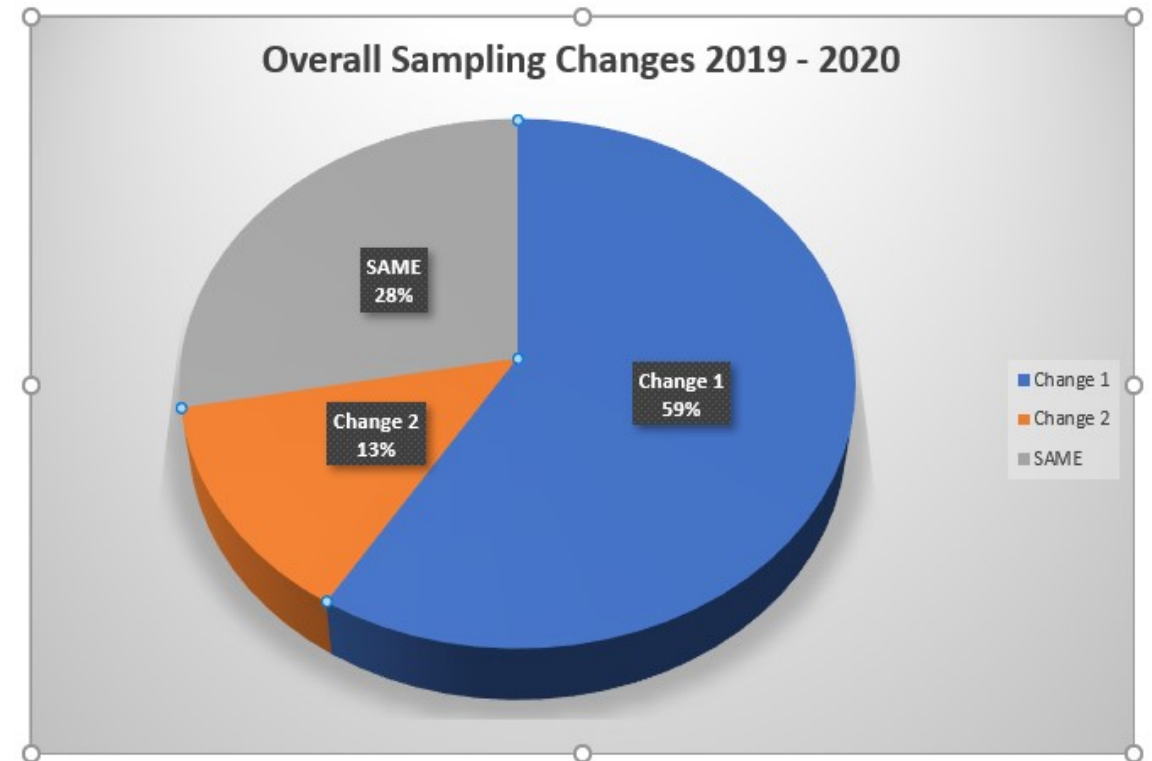


Options, Short Courses & Skills for Life

- Art
- Business
- European Section
- Home Economics
- Metalwork
- Music
- Technical Graphics
- Woodwork
- Philosophy/Artistic Performance
- Digital Media Literacy
- Religion
- Vocabulary Enrichment Program (VEP)
- Mindfulness
- Drama
- Maths
- Coding, Film Studies, Visual Design Technology

Option sampling

- Option subjects sampled over two blocks of four weeks
- Four subjects sampled in total by the end of the sampling period
- Option choices set up to start after the Halloween break



Modern Foreign Languages



European Section

The French European bilingual section was created in 1995 by the French Embassy's Cultural service in Dublin.

The students have the opportunity to be enrolled in intensive French courses as well as French culture and civilisation courses, cooking lessons, all facilitated in French by native speakers.



European Section - DELF

- DELF stands for '**Diplôme d'Étude en Langue Française**'
- It is an internationally recognised qualification that certifies French Language skills
- It is recognised by universities, employers and governments and based on the *Common European Framework for Languages*



- The certificate has permanent validity and is a great asset on a student's CV
- The preparation for the DELF exams is excellent preparation for the Junior and Leaving Certificate exams as well



European Section – ‘les avantages’

- Often smaller classes
- Native teachers
- Participation in a trip to France in 2nd year
- Participation in school outings and cultural events
- Greater exposure to the language
- Substantial oral language practice
- Opportunity to obtain an internationally recognised certification (DELF)
- Access to support from French language assistant



Transitioning to Secondary – Curriculum

- Increase in the number of subjects studied; some new; a 'timetable'
- Active learning methodologies becoming more common at secondary, but there are still significant differences; pace of learning faster and broader
- Previously interaction with one or two significant adults outside the family – now maybe a dozen different adults over the week
- Compared with primary much more personal responsibility for homework, books and equipment

“much more responsibility to remember stuff, like, remembering what homework to do and for when, and what to bring in to different classes”



Transitioning to Secondary – Environment

- Buildings, number of rooms – Getting around
- Less movement between rooms in primary
- Possibly more movement within the classroom
- A lot more people – students, teachers, NTS
- Eldest to youngest; physical size of older students
- Lockers – expected to use them effectively



Transitioning to Secondary – Social

- Changing from child to adolescent
 - More freedom, less direct parental supervision
 - Growing influence of peers
 - The journey to and from school
 - Who do they make friends with? How many is enough? Is everyone doing it?
-
- Friends – making new, keeping old (significant issues from same school – contact year leader: dermot.oneill@newparkschool.ie by the end of April)



Transitioning to Secondary – Advice for Parents

- Put a copy of the timetable in a clear and visible spot at home; **label books & clothes**
- Strongly consider large mesh zip pockets
- Proper use of journal and lockers will help
- Show, don't do (Forget lunch?)
- Good night time routines – times and devices
- Social media – Social mediums
- Talk to your child about their day; listen, don't solve
- Nervousness; loneliness; upset; friends; fatigue
- Advise making contact with other parents
- Contact the form teacher if issues arise; second year





Whether you are looking to grow your business or realise value, talk to us today about how AIB Corporate Finance can advise you.

www.aib.ie/corporatefinance

AIB Corporate Finance Limited is regulated by the Central Bank of Ireland.



First year in secondary school: a survival guide

Teachers and students share their tips for making the transition to a new school a positive experience for pupils . . . and how parents can help

© Mon, Aug 20, 2018, 08:01

Louise Ni Chriodáin



Starting a new school can be both an exciting and anxious time. Photograph: iStock

Also in Health & Family »

A cardiac problem that could strike at any time



Louise Hoey and her children tested positive for genetic condition Long QT syndrome

Has your sense of smell changed recently?



Anosmia can affect bonding, cut people off from memories and lead to depression

Trying to find a holiday for my brood is making me despair



I wasn't quite prepared for the recoiling in horror when innocent enquiries were made about our options

Going uphill need not necessarily be a battle for runners



It's time to welcome the hills into our running miles



Student Support



Guidance
Counsellors



Chaplain



Nurses



AEN Support
teachers



Extra-Curricular Activities

First Year ECA opportunities					
	Monday	Tuesday	Wednesday	Thursday	Friday
8-8.30 am	Free Swim	Free Swim	Free Swim	Free Swim	Free Swim
Lunch	Chess M2	Chess M2		Chess M2	Chess M2
	Green Schools G1	LGBT+ group M4		Poetry Aloud M4	Lego Club T15
					Newsletter T16
					Christian Union T11
After School	Rugby 4-5	Girls Hockey 4-5	Visual 12.50-2pm T16	Rugby 4-5	Boys Hockey 4-5.30
	Girls Basketball 4-5	Boys Hockey 4-5	Free Swim 12.45-1.30	Girls Hockey 4-5.30	
		Boys Basketball 5-6			
	Orchestra G7	Choir G7			
Drama is on a different day each week, to make it available to as many people as possible. See the drama noticeboard					
Other Extra Curricular Activities will be available from time to time, such as Lunch Time 5-a-side football.					



Additional Educational Needs

- Provide all professional reports to the school as soon as possible
- Team of support teachers
- Your child will meet his/her assigned key worker in the first week
- AEN contact with primary schools



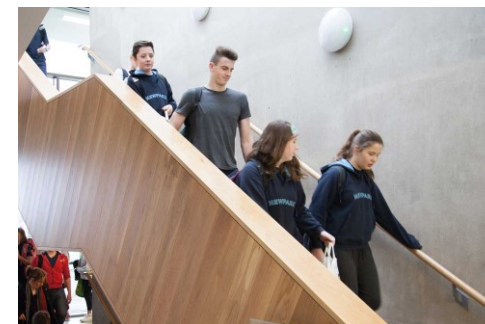
Attendance & Punctuality

- Academic and social wellbeing
- National Educational Welfare Board
- School starts at 8:45
- School finishes 15:50 (Wednesday – half day)
- Arriving on time – to all students' benefit



Estimate of costs

- **Books (approximately)** €300
- **Uniform (approximately)** €100
(Hoodie, Navy Tee x 2, Tracksuit bottoms, White Tee x 2)
- **Locker rental (PTA Six Years)** €135
- **Voluntary Contribution Year 1** €325
- **ECA Sports** €150
- **Personal Accident Insurance** €12



Child Safeguarding Policy

- The school's Child Safeguarding Policy is set up in line with DES Child Protection Guidelines
- Anti-Bullying Policy – drawn up in line with DES Guidelines
- Completed after consultation with staff, students and parents
- Based on Restorative Practice methods

See newparkschool.ie/child-protection



Parent/Guardian Involvement

- The Newpark PTA
- Parent/Guardian evening talks
- The Board of Management
- Voluntary activity

newparkschool.ie/parent-teacher-association



Important future dates

- Year one induction: March 21st, 2020
- First day in school: Late August 2020

[First years only; meet form teacher, receive timetable, meet prefects, have short assembly]

- Next information evening: September 2020
- Report log in: December 2020

newparkschool.ie/standardized-calendar



Important contact details

Cancellations? Please inform Ms. Rachel Plunkett immediately

Postal address Newtownpark Avenue, Blackrock, Co. Dublin, A94 EV70

Telephone 01 288 3724 (09.00 – 16.00)

Website www.newparkschool.ie

Email office@newparkschool.ie



Questions & Answers



Many thanks for coming along this evening

dermot.oneill@newparkschool.ie
eoin.norton@newparkschool.ie



