

Starting in Newpark: Parent/Guardian Information Session



Agenda

- What kind of school is Newpark? What's its ethos?
 - Curriculum provision? Junior Cycle?
 - Extra curricular provision?
 - Who will you and your child meet? Who's who?
 - Communication within the school community?
 - Transitioning from primary to post-primary?
-
- Some practicalities and future dates
 - Q&A



Ethos

We are a *comprehensive* school illustrated in three core value strands:

- Comprehensive intake
- Comprehensive curriculum
- Comprehensive outcomes



Comprehensive intake

Diversity of culture, belief, ethnicity, ability, sexual orientation, gender identity and socio-economic background... Not just *tolerated*, but seen as a *value to the benefit of all*



Comprehensive curriculum

We believe all young people have a right to both an academic and a vocational education and that all young people achieve the best educational outcomes by pursuing these different strands, to greater and lesser extents, together



Comprehensive outcomes

We value a comprehensive range of destinations for our students because we believe that is what is right for them, right for their communities and right for our society



Agenda

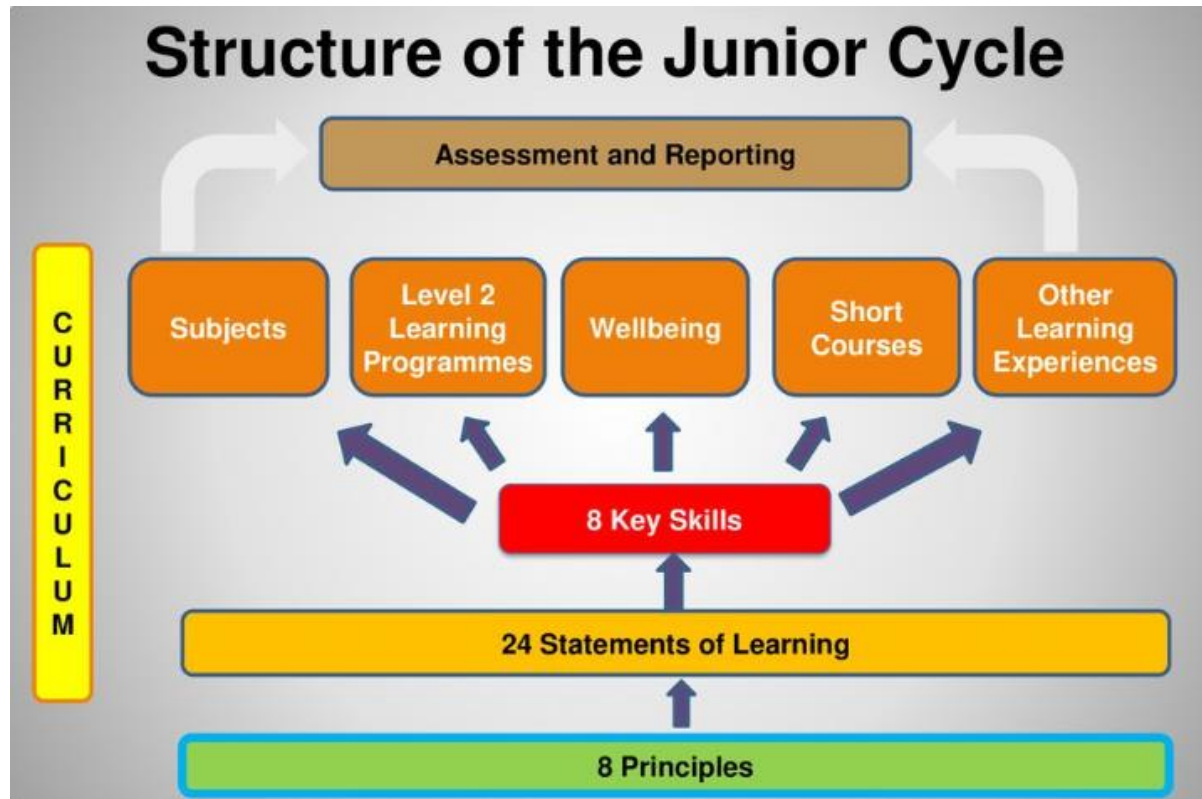
- ~~What kind of school is Newpark? What's its ethos?~~
 - Curriculum provision? Junior Cycle?
 - Extra curricular provision?
 - Who will you and your child meet? Who's who?
 - Communication within the school community?
 - Transitioning from primary to post-primary?
-
- Some practicalities and future dates
 - Q&A



Curriculum provision



Junior Cycle



Junior Cycle

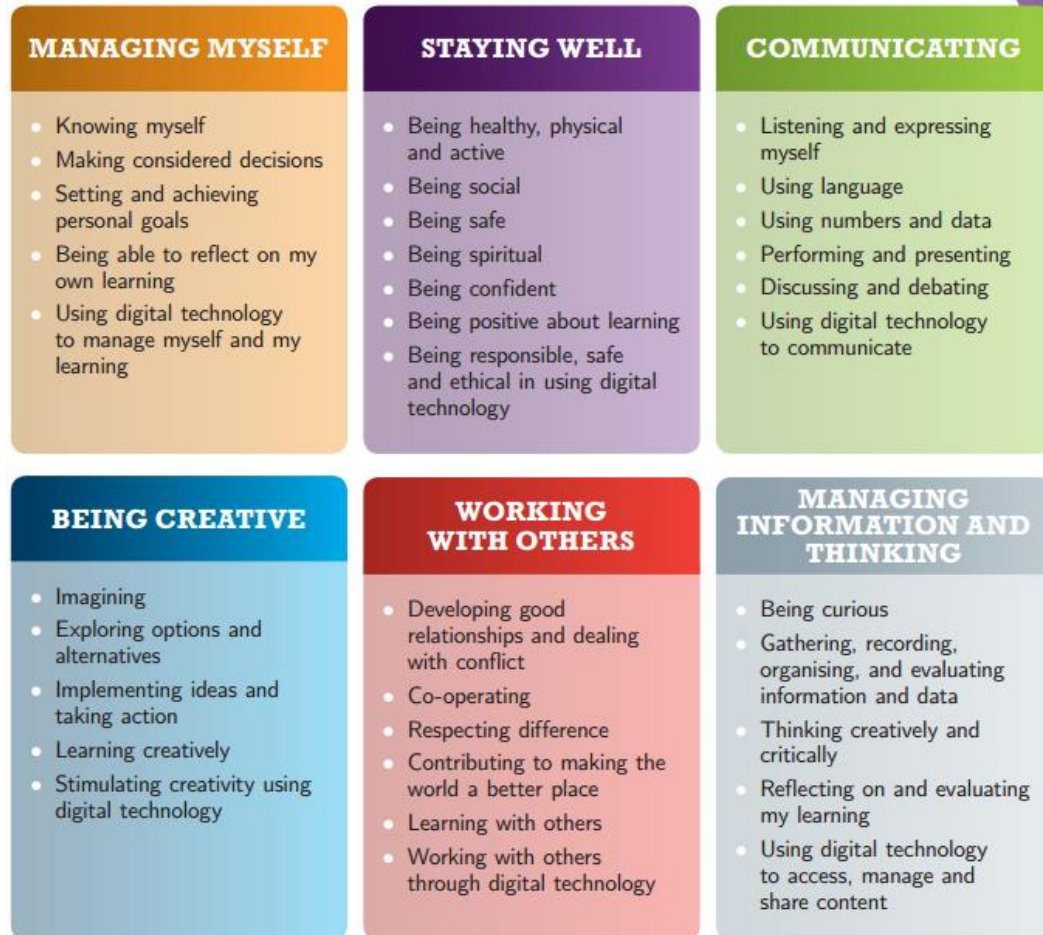


Junior Cycle

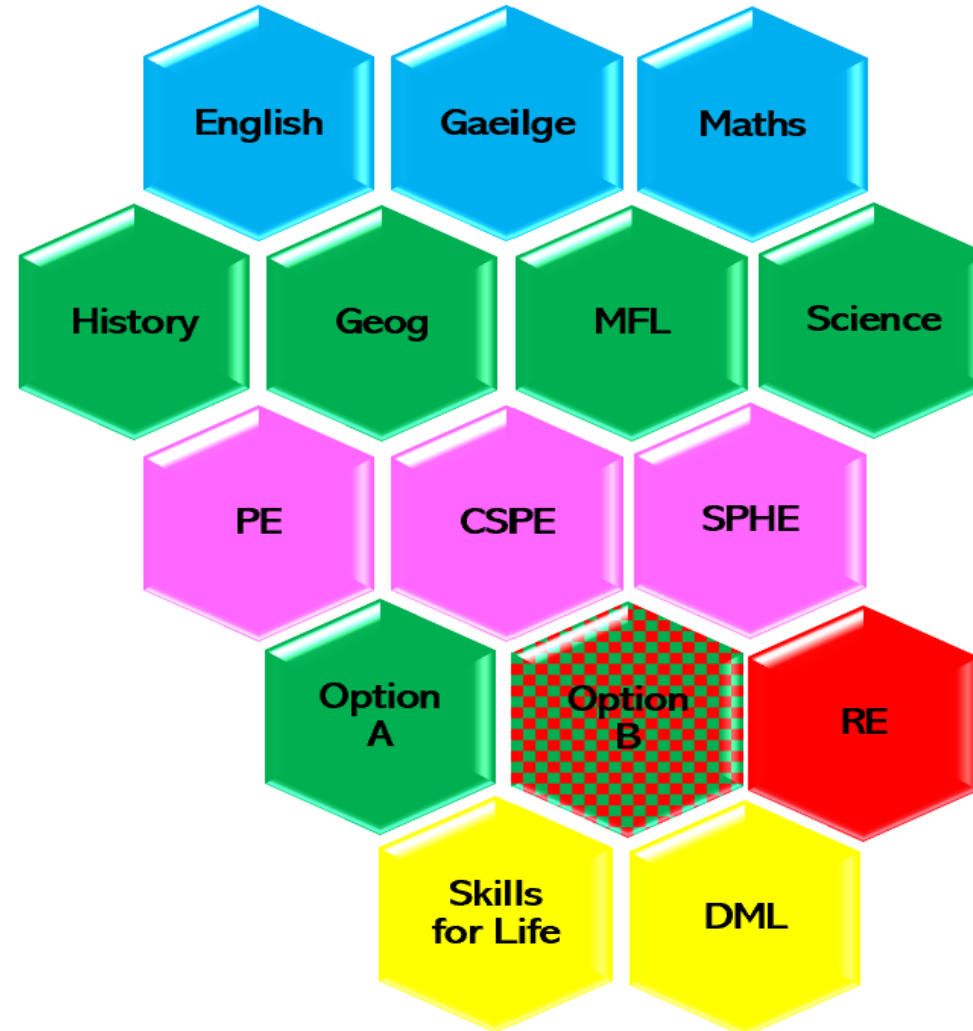
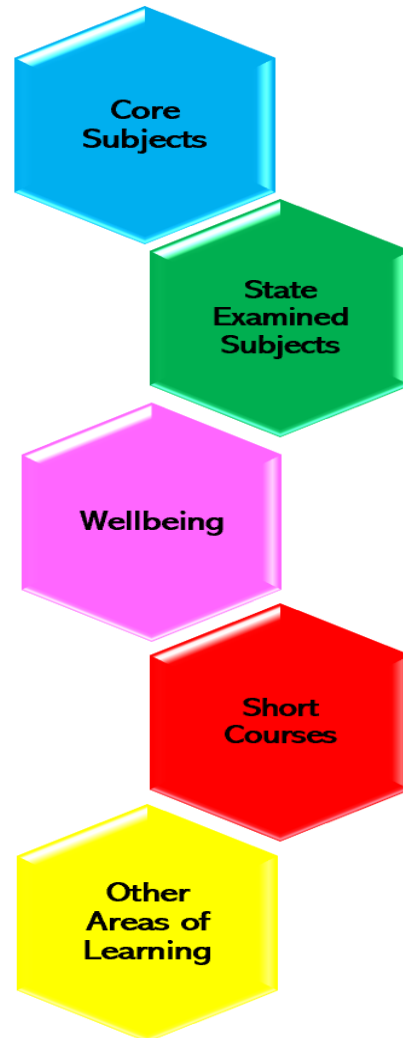


Newpark
Comprehensive School

Junior Cycle



Junior Cycle Programme in Newpark



Options, Short Courses & Skills for Life

- Art
- Business
- European Section
- Home Economics
- Metalwork
- Music
- Technical Graphics
- Woodwork
- Philosophy/Artistic Performance
- Religious Education
- Digital Media Literacy
- Vocabulary Enrichment Program (VEP)
- Mindfulness, Drama, Numeracy
- Climate Action, Film Studies, Visual Design Technology

Option sampling

- Options introduced over the first two weeks of term one.
- Introduction to all eight option subjects, as well as to both short courses.



Modern Foreign Languages



European Section

The French European bilingual section was created in 1995 by the French Embassy's Cultural service in Dublin.

The students have the opportunity to be enrolled in intensive French courses as well as French culture and civilisation courses, cooking lessons, all facilitated in French by native speakers.



European Section - DELF

- DELF stands for '**Diplôme d'Étude en Langue Française**'
- It is an internationally recognised qualification that certifies French Language skills
- It is recognised by universities, employers and governments and based on the *Common European Framework for Languages*



- The certificate has permanent validity and is a great asset on a student's CV
- The preparation for the DELF exams is excellent preparation for the Junior and Leaving Certificate exams as well



European Section – ‘les avantages’

- Often smaller classes
- Native teachers
- Participation in a trip to France in 2nd year
- Participation in school outings and cultural events
- Greater exposure to the language
- Substantial oral language practice
- Opportunity to obtain an internationally recognised certification (DELF)
- Access to support from French language assistant



Agenda

- ~~What kind of school is Newpark? What's its ethos?~~
 - ~~Curriculum provision? Junior Cycle?~~
 - Extra curricular provision?
 - Who will you and your child meet? Who's who?
 - Communication within the school community?
 - Transitioning from primary to post-primary?
-
- Some practicalities and future dates
 - Q&A



Extra curricular - Academic

- SciFest
- Maths Week
- Maths Olympiad
- Science Week
- French Week
- Seachtain na Gaeilge
- Green Week
- Music Links Programme
(Schlinks)



Extra curricular - Sport

- Hockey
- Rugby
- Basketball
- Swimming
- Athletics
- Equestrian
- Chess



Extra curricular – Arts & Culture

- Drama
- Visual
- Animé
- Green Schools
- Christian Union
- Model United Nations
- Creative Writing
- Newpark Singers
- Newpark Orchestra
- Film making
- LGBT+
- Club Gaeilge
- Newsletter



Extra curricular - Travel

- Aran Islands
- London
- Stratford
- Donegal
- Venice
- Biarritz
- Berlin
- Language Exchange



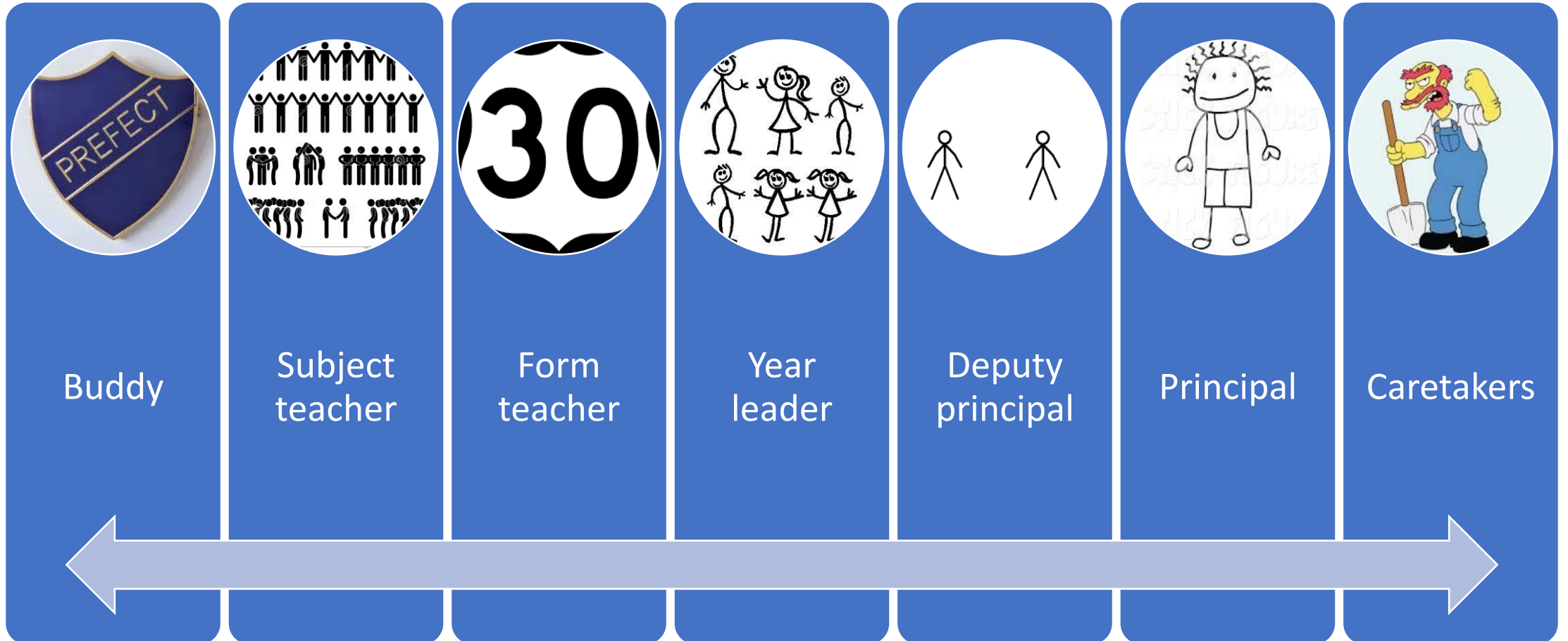
Agenda

- ~~What kind of school is Newpark? What's its ethos?~~
- ~~Curriculum provision? Junior Cycle?~~
- ~~Extra curricular provision?~~
- Who will you and your child meet? Who's who?
- Communication within the school community?
- Transitioning from primary to post-primary?

- Some practicalities and future dates
- Q&A



People your child will encounter



Student Support



Guidance
Counsellors



Chaplain



Nurses



Support
teachers



Wellbeing

- 400 hours over Junior Cycle
- SPHE, PE, CSPE
- Senior Cycle 'Life Skills'
- Student Voice
- Restorative Practices
- Relationship & Behaviour Policy



Agenda

- ~~What kind of school is Newpark? What's its ethos?~~
- ~~Curriculum provision? Junior Cycle?~~
- ~~Extra curricular provision?~~
- ~~Who will you and your child meet? Who's who?~~
- Communication within the school community?
- Transitioning from primary to post-primary?

- Some practicalities and future dates
- Q&A



Communications

- VSware App
- Website newparkschool.ie
- Text message
- Email/letter
- Student Journal
- Parent/Guardian teacher meetings
- Newsletter



Agenda

- ~~What kind of school is Newpark? What's its ethos?~~
- ~~Curriculum provision? Junior Cycle?~~
- ~~Extra curricular provision?~~
- ~~Who will you and your child meet? Who's who?~~
- ~~Communication within the school community?~~
- Transitioning from primary to post-primary?
- Some practicalities and future dates
- Q&A



Transitioning to Secondary – Curriculum

- Increase in the number of subjects studied; some new; a 'timetable'
- Active learning methodologies increasing all the time at secondary, but there are still significant differences; pace of learning faster and broader
- Previously interaction with one or two significant adults outside the family – now maybe a dozen different adults over the week
- Compared with primary much more personal responsibility for homework, books and equipment

“much more responsibility to remember stuff, like, remembering what homework to do and for when, and what to bring into different classes”



Transitioning to Secondary – Environment

- Buildings, number of rooms – Getting around
- Less movement between rooms in primary
- Possibly more movement within the classroom
- A lot more people – students, teachers, NTS
- Eldest to youngest; physical size of older students
- Lockers – expected to use them effectively



Transitioning to Secondary – Social

- Changing from child to adolescent
 - More freedom, less direct parental supervision
 - Growing influence of peers
 - The journey to and from school
 - Who do they make friends with? How many is enough? Is everyone doing it?
-
- Friends – making new, keeping old (significant issues from same school – contact year leader; details to follow by email.)



Transitioning to Secondary – Advice for Parents

- Put a copy of the timetable in a clear and visible spot at home; **label books & clothes**
- Strongly consider large mesh zip pockets
- Proper use of journal and lockers will help
- Show, don't do (Forget lunch?)
- Good night-time routines – times and devices
- Social media – Social mediums
- Talk to your child about their day; listen, don't solve
- Nervousness; loneliness; upset; friends; fatigue
- Advise making contact with other parents
- Contact the form teacher if queries or issues arise





Whether you are looking to grow your business or realise value, talk to us today about how AIB Corporate Finance can advise you.

www.aib.ie/corporatefinance

AIB Corporate Finance Limited is regulated by the Central Bank of Ireland.



First year in secondary school: a survival guide

Teachers and students share their tips for making the transition to a new school a positive experience for pupils ... and how parents can help

Mon, Aug 20, 2018, 08:01

Louise Ni Chriodáin



Starting a new school can be both an exciting and anxious time. Photograph: iStock

Also in Health & Family »

A cardiac problem that could strike at any time



Louise Hoey and her children tested positive for genetic condition Long QT syndrome

Has your sense of smell changed recently?



Anosmia can affect bonding, cut people off from memories and lead to depression

Trying to find a holiday for my brood is making me despair



I wasn't quite prepared for the recoiling in horror when innocent enquiries were made about our options

Going uphill need not necessarily be a battle for runners



It's time to welcome the hills into our running miles



Newpark
Comprehensive School

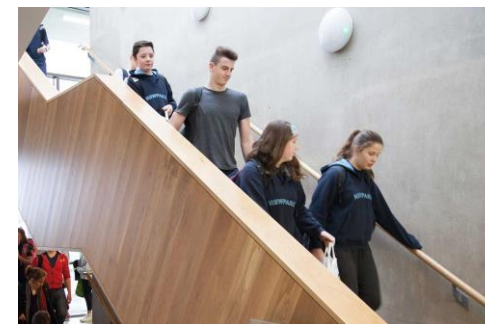
Agenda

- ~~What kind of school is Newpark? What's its ethos?~~
- ~~Curriculum provision? Junior Cycle?~~
- ~~Extra curricular provision?~~
- ~~Who will you and your child meet? Who's who?~~
- ~~Communication within the school community?~~
- ~~Transitioning from primary to post-primary?~~
- Some practicalities and future dates
- Q&A



Estimate of costs

- **Books (approximately)** €300
- **Uniform (approximately)** €100
(Hoodie top, Navy Tee x 2, Tracksuit bottoms, White Tee x 2)
- **Locker rental (to PTA, for six years)** €135
- **Voluntary Contribution Year 1** €300
- **ECA Sports** €150
- **Personal Accident Insurance** €12



Voluntary contribution

There is no charge for tuition

- School Nurses
- Equipment
- Improvement projects
- Library
- Books and prizes
- Extra curricular activities



Future dates to note

- Student campus visits: June & August 2021
- First day in school: Friday 27th August 2021
- Next information session: September 2021
- Meet the Form Teacher: December 2021



Important contact details

Initial payment due by Friday 30th April. Any queries or issues please get in touch with Ms. Rachel Plunkett.

Postal address Newtownpark Avenue, Blackrock, Co. Dublin, A94 EV70

Telephone 01 288 3724 (09.00 – 16.00)

Website www.newparkschool.ie

Email office@newparkschool.ie



At our first assembly...



Some Covid-19 differences



Some Covid-19 differences



Some Covid-19 differences



Questions & Answers



Many thanks for joining this evening

rachel.plunkett@newparkschool.ie

eoin.norton@newparkschool.ie

